



SITE ADDRESS : Plot Nos. 679, 680 Business District South, Bahria Town Phase 8.  
City2 Marketing Office 368, Street 05, I-9/3, Industrial Area, Islamabad.

VISUALIZED BY



**MARKETING & SALES PARTNER**  
city2marketing.com  
+92 309 333 55 05



## AN ELITE LOCALE

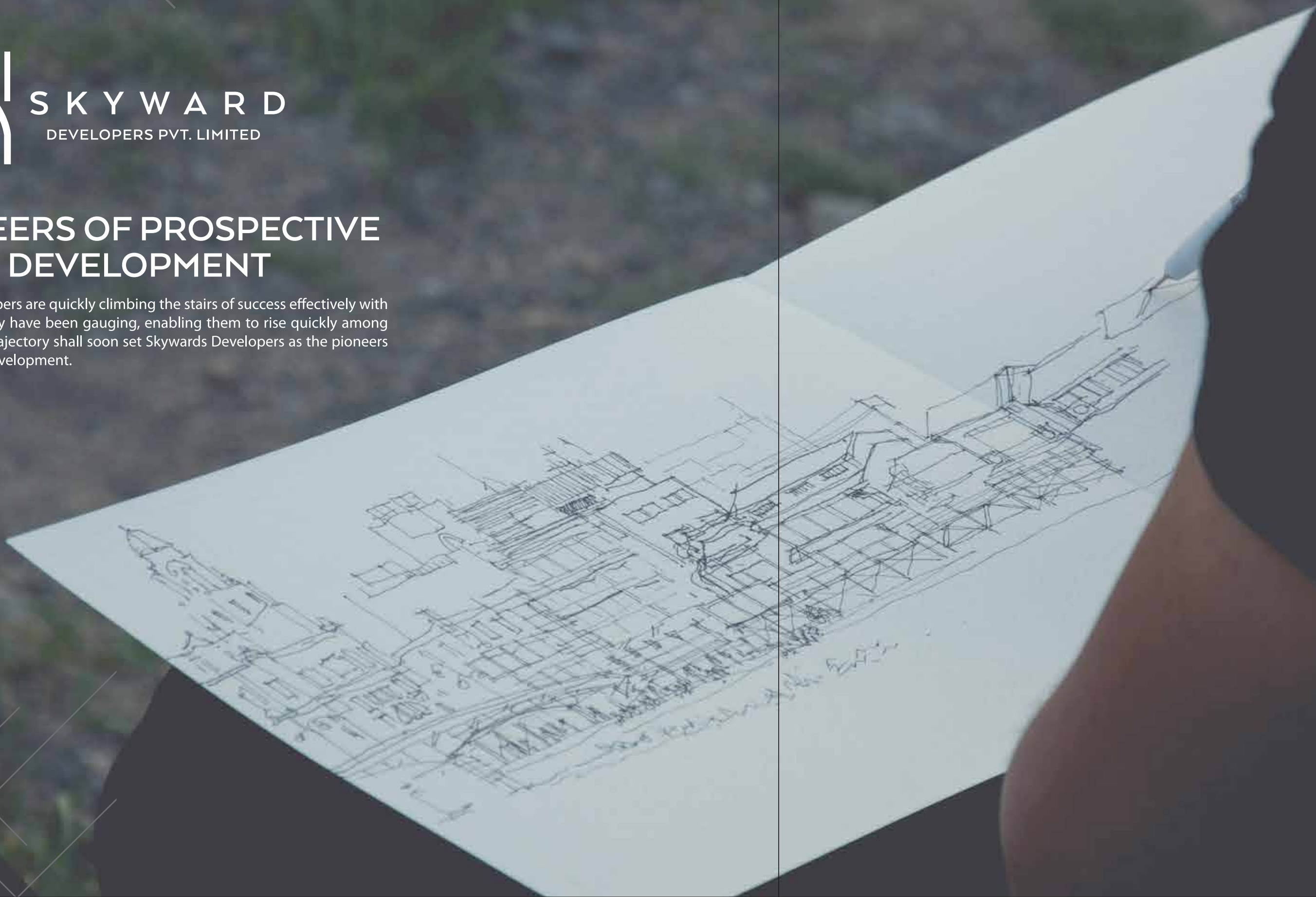
Rawalpindi, the neighbour city to the capital of Pakistan is among the most scenic cities of Pakistan. The lush green hills that surround Bahria Town Rawalpindi provide for an impeccably fresh lifestyle which is one of the reasons the elite prefer their primary residence here. The posh locality and residential class sets Bahria Town Rawalpindi apart from all its peers allowing it the primary place as a pioneer society.





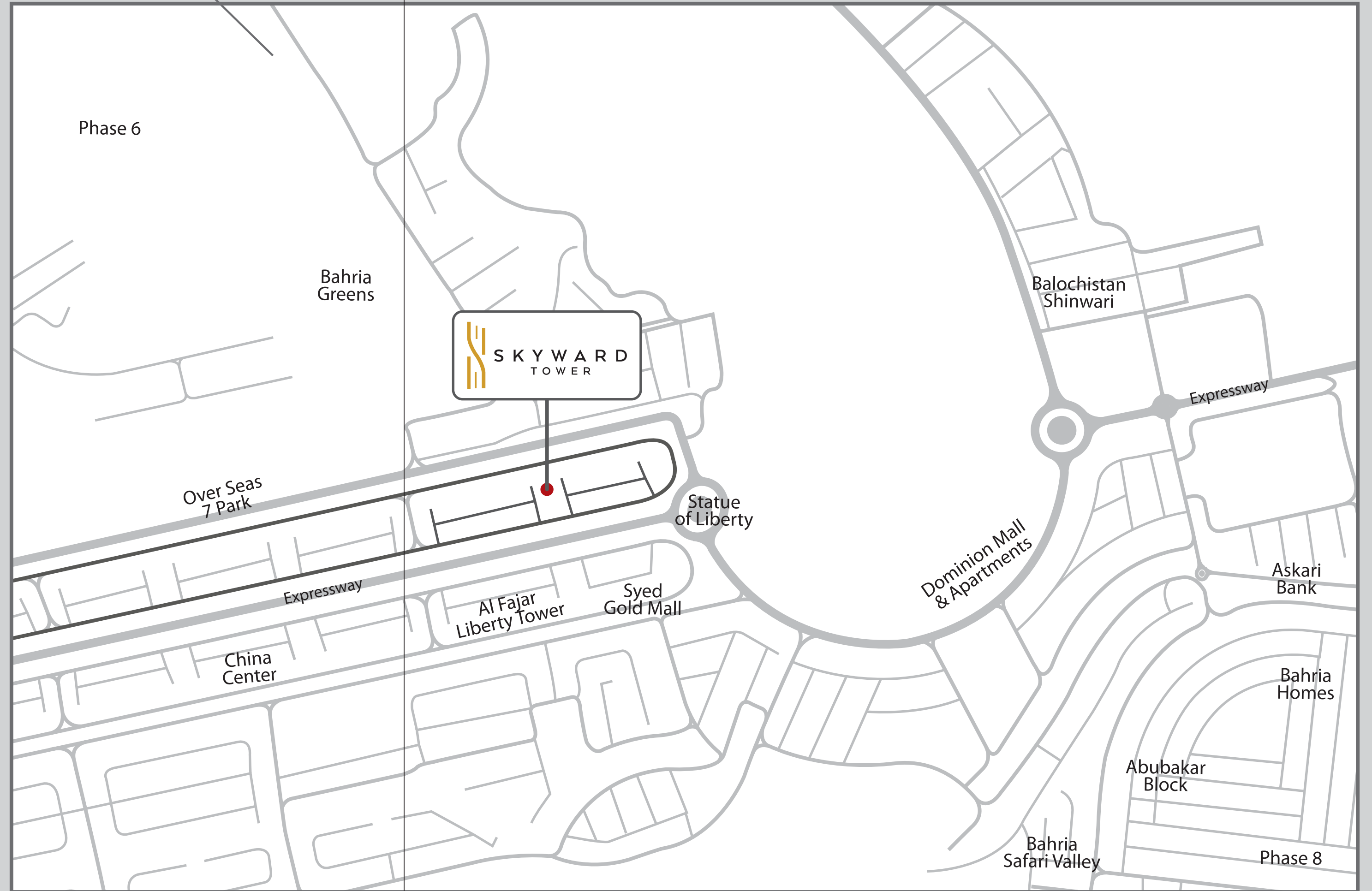
## PIONEERS OF PROSPECTIVE DEVELOPMENT

Skyward Developers are quickly climbing the stairs of success effectively with each project they have been gauging, enabling them to rise quickly among the ranks. This trajectory shall soon set Skywards Developers as the pioneers of Real Estate Development.



## FOCAL POINT OF RESIDENCE

Skyward Tower is located right in the heart of business district at Bahria Town Rawalpindi. A few steps away from the Statue of Liberty. Closely connected to Bahria Expressway, Skyward Tower is conveniently linked to all the major and routine destinations typical for a resident. As Rawalpindi Ring Road is only a few minutes-drive (merely 5-10 minutes) away, conveyance from and to Skyward Tower is an easy feat on all your trips.



## A MYSTIQUE OF MODERNITY

The Ground+12 titanic structure stands as an example of absolutely elegant architecture mixed in a dynamic monochromatic shade of opulence. The magnificence of this 200 ft. tall titan is visible from afar due to the grandly splendid outlook of the massive tower, which is the largest in the vicinity.



## A MAJESTIC GREETING

The elegant reception greets you in an affluent ambience as you enter for your destination. The dynamic setting is alluring to your sight, mesmerizing it with sheer architectural ingenuity.



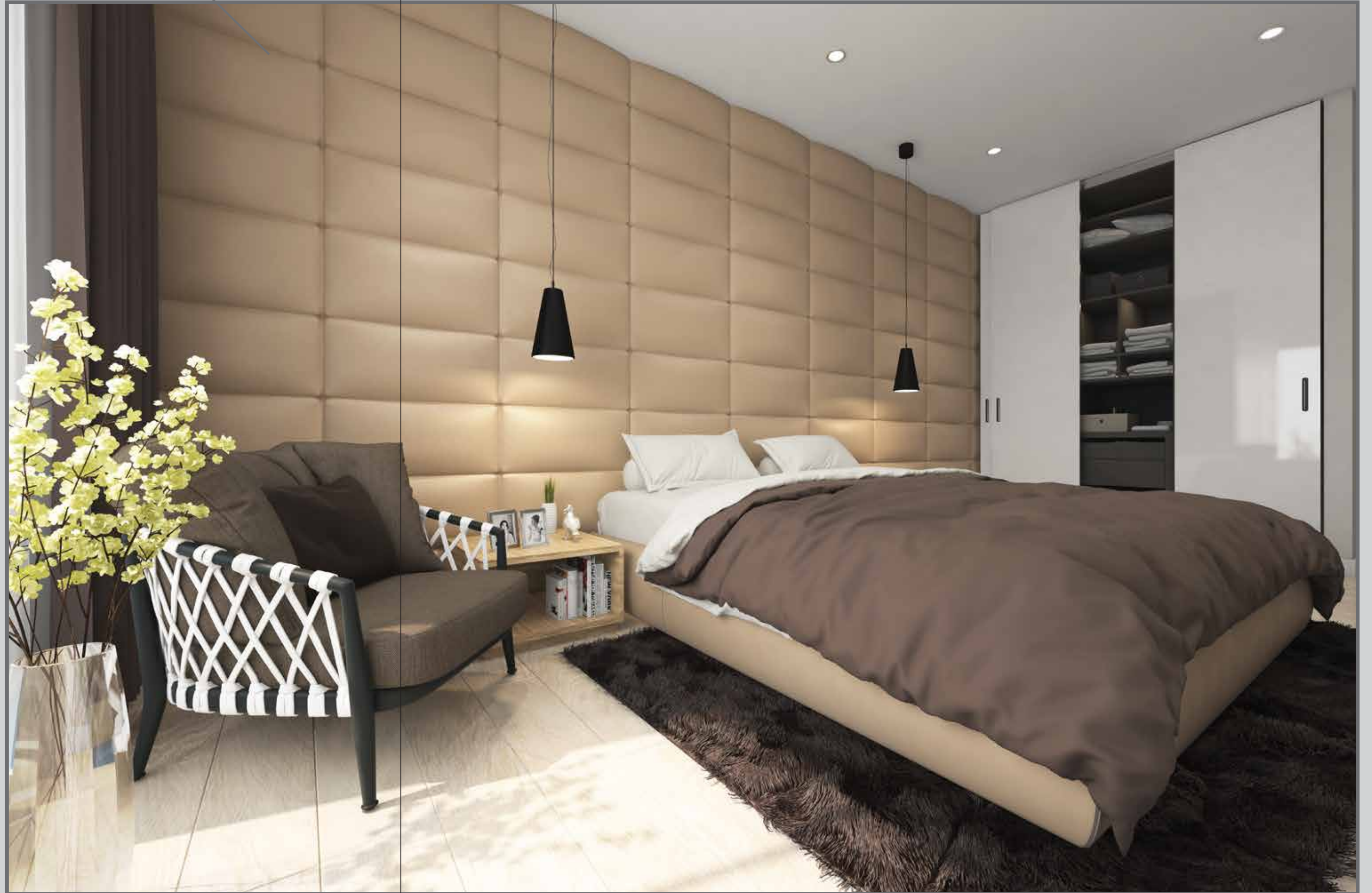


## YOUR GRAND ABODE

Skyward Tower was planned with the specific ideology to cater to every type of chic living that is trending in the world. This is the reason that the range of apartments is quite extensive, featuring three-bedroom, two-bedroom, one-bedroom, studio luxury semi-furnished apartments along with two penthouses to ensure that you have the choice to select the one that completely reflects your lifestyle. As you enter true grandeur from the lusciously wide corridors, your excitement only increments with every step in your home.

## LAVISH BED CHAMBERS

The classy master bed chambers are graciously spacious to accommodate your majestic settings easily and allow you unmatched comfort to rest and recharge. Fitted with split ACs, your sleeping chamber ensures that each night comes with a blissful sleep. The naturally illuminated chamber is sure to wake you up fresh and begin the course of the day fully energized. The attached spacious balcony provides with a mesmerizing view and an elegant scenery with the most comfortable vantage point for you.





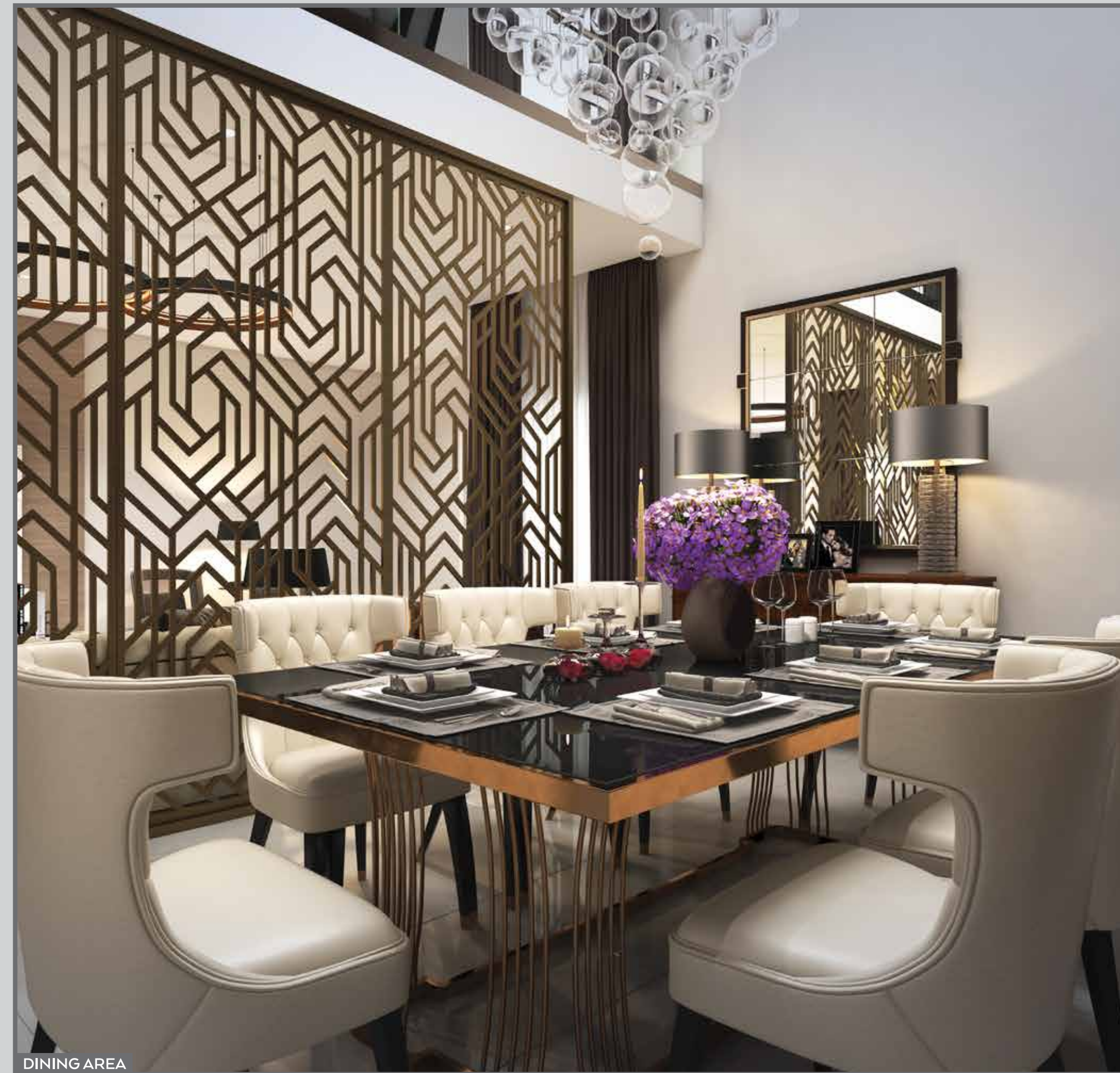
## DELUXE LOUNGES

The luxuriously palatial lounge is a definitively elegant addition to mesmerize your gaze lit naturally from the balcony window. The opulent interior with a patterned partition enables sufficient privacy while minimally enhancing the overall ambience.



## FEAST FAÇADE

The chic dining area is neatly partitioned from the lounge allowing you to enjoy your meals in peace with your family in the comfortably cosy space.



DINING AREA

## REGAL RESTROOMS

Breathe a sigh of relief as you enter your restroom to refresh. The Elegant settings along with classy tiled flooring induces an aura of royalty ensuring a feeling of satisfaction from within.



BATHROOM

## CULINARY ART PRACTICE

Classy European kitchens are a perfect place in your home to rekindle the passion for cooking and enhancing your culinary expertise. The cosy space allows for enough movement enabling you to easily partner up with a sous-chef.



KITCHEN



# SKYWARD TOWER

CHANEL

Klein

DKNY



**LET YOUR BRAND  
GO GRAND**

## A MULTI-FLOOR SHOPPING GALLERIA WITH 100+ OUTLETS

Skyward Tower features an immersive multi-storey high-ceiling shopping mall spanning over the course of three floors totaling more than a hundred shops. The luxurious escalators render easy traversal from one commercial floor to the next, eventually leading to the food court. Centrally air-conditioned, the modernistic galleria featuring the most renowned brands of Pakistan is sure to attract a horde of customers propelling your shop to success as well. Get ready to experience unparalleled profits from your shop at the galleria in Skyward Tower.



SHOPS CORRIDOR







## EXPAND YOUR EATERY

The massive food court allows for a massive seating to a large fleet of customers. With a special space set aside for two complete restaurants along with 11 takeaway eatery positions, your restaurant will be among the best of Pakistan in direct competition allowing a significant windfall in terms of profits for your business.

## OPEN DINING AMBIENCE

For those who prefer eating with a majestic view of the horizon, the open-air food court provides with a scenic sight of the city with a classy setting. The breezy atmosphere is a welcome environment for you to enjoy as you have your meal with your loved ones.



FOOD COURT



**FEATURED VALUE  
ADDITIONS**

## LIFTING YOU HIGHER

Skyward Tower features a plethora of alluring amenities, amongst them three state-of-the-art lifts that are sure to induce a feeling of awe and excitement within you as you traverse effortlessly between floors. One of the three elevators are reserved for penthouses, ensuring luxury a tad above and allowing for an ease unparalleled.



LIFTS & STAIRCASE

## A SPARKLING SWIM

The rooftop at Skyward Tower features a grand infinity pool with sparkling water. This refreshing swimming pool is available 24/7 to the residents at Skyward Tower, whenever they want it.



INFINITY POOL

## PRESTIGIOUS POSITIVITY

The rooftop at Skyward Tower features a swimming pool which shall be available to every resident, ensuring you can refresh yourself whenever you deem fit. The adjacent fitness center provides for the perfect opportunity to stay fit and healthy. A dedicated car parking with connected elevators ensure convenient traversal from your vehicle to your floor. Constant CCTV monitoring with strategically placed cameras mean that we are vigilant 24/7 about your safety.



PARKING AREA



SWIMMING POOL



GYMNASIUM



PRAYER AREA



CCTV MONITORING



24/7 POWER BACKUP

EXPERIENCE  
MODERN  
ROYALTY

